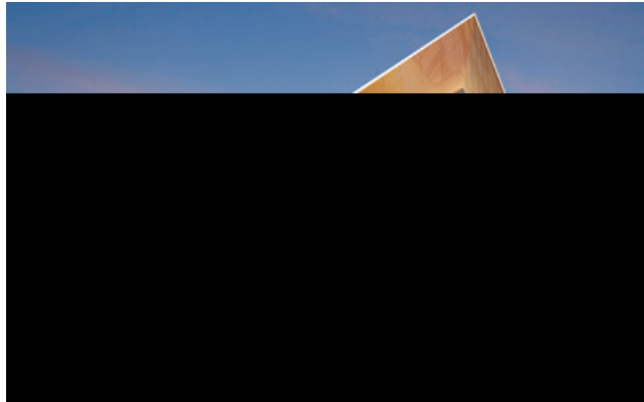


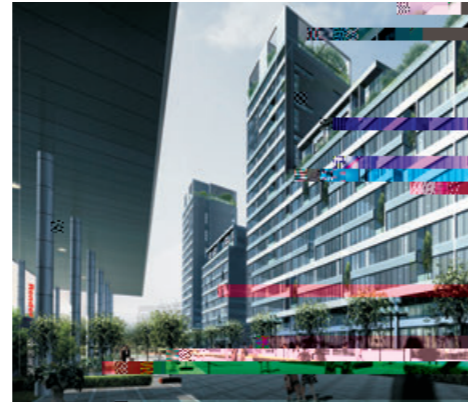




1 1 1 1 1



h vttv.ER+ tt.r)zrETrEtv..TvEt.v1



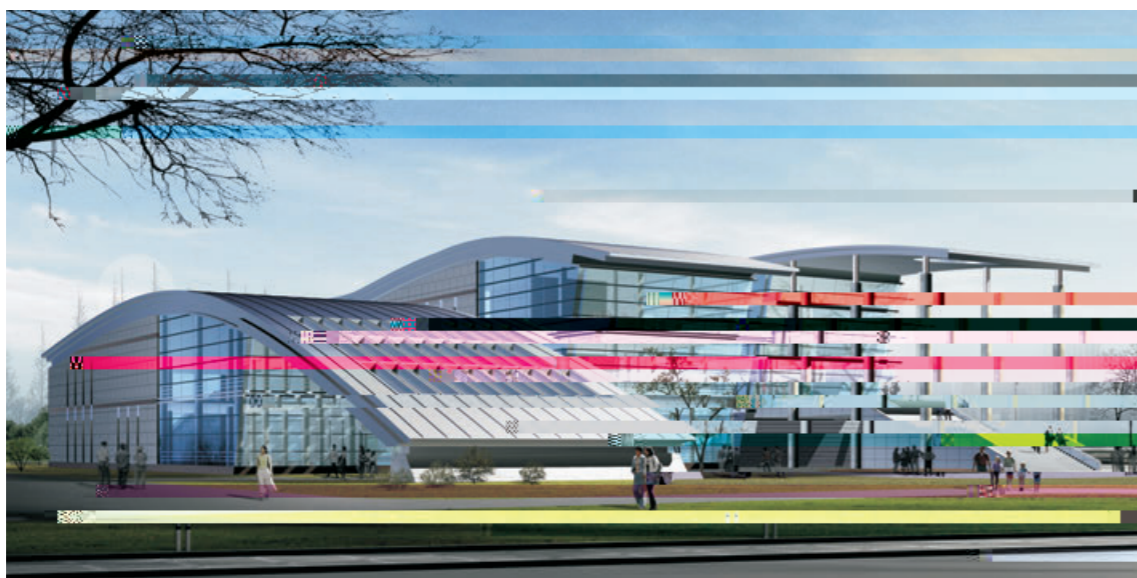
br..lrEutV:frEtz.Eb...vt+



Tr..l zP>DMr ttT..vttvEt^ ry, Etb, zEt



b, CE tr br..lzExTvEt...



lgZVe_R^ bYZ_Z_X tdeRc bcZ_eZ_Y R_U bRT\RXZ_XT' ?4eU



TrCE.r.br t...rEa...vt+



Y'r {zE} zxytEe' tt.Ck, Ev



RSTW' ev] RYf X



Tr z.l.r' Tr}}



td^eS^ zuEx1 vLr%r tCEuz b.z%tv1
]z- zvu>cv%dvu]gv..tz €



[eTT, .f, .r.tz €1



bebz.tr WvtzCu, [rCETr.x,]z4Tzyv.rExS, x, ..b...vt+

1111
1111

11

1111

DAA~ ~ 1

1111
1111

EMS ()
1111

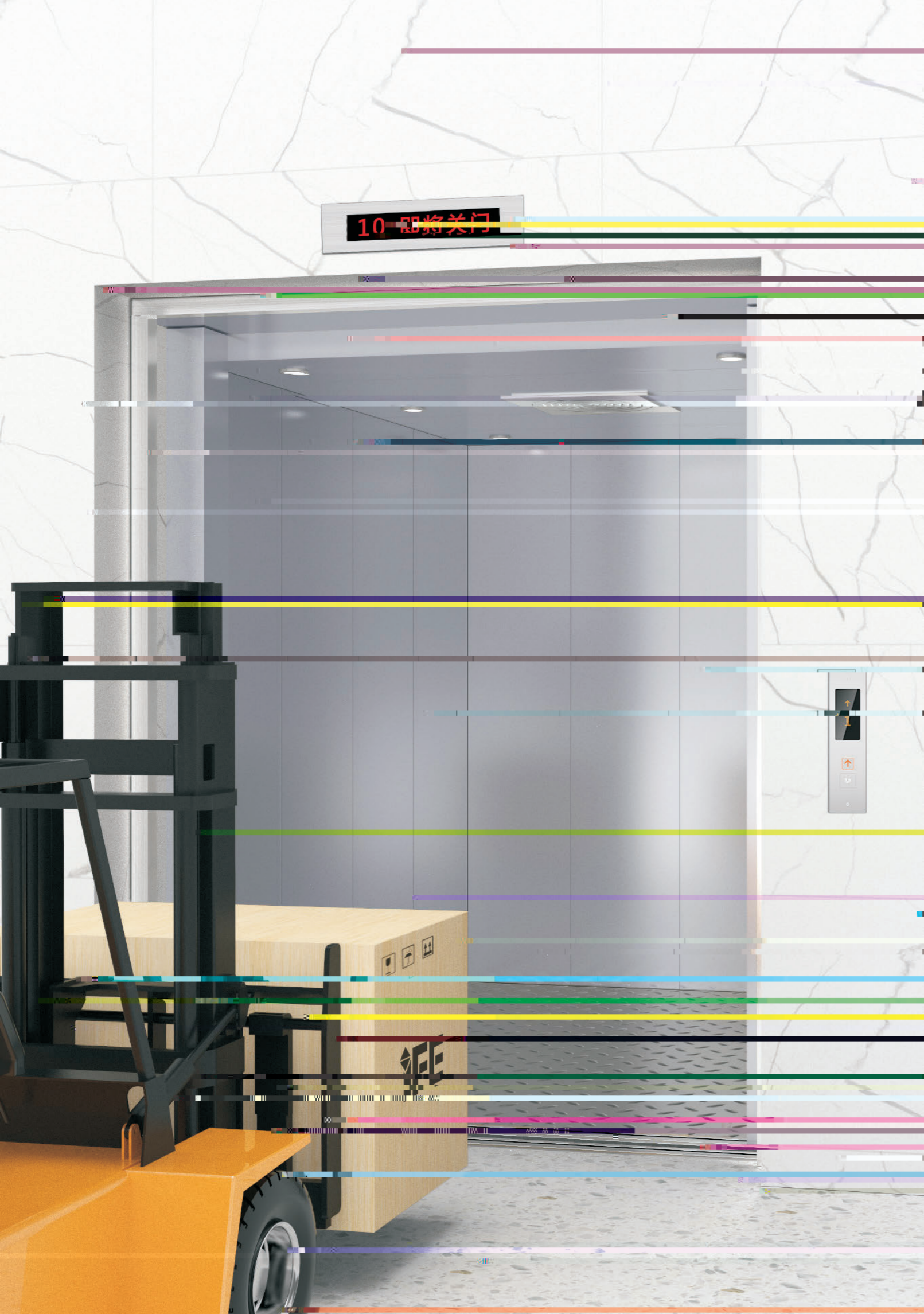
k] CABECAEHAGJE?A1

◆11

k] CABEBADDHABF?H11

1111

1



ATLAS



ATLAS-WT3

ATLAS-W

b9x:

BFAA
CAAA
CFAA
DAAA

DCAA
EAAA
FAAA

% @:

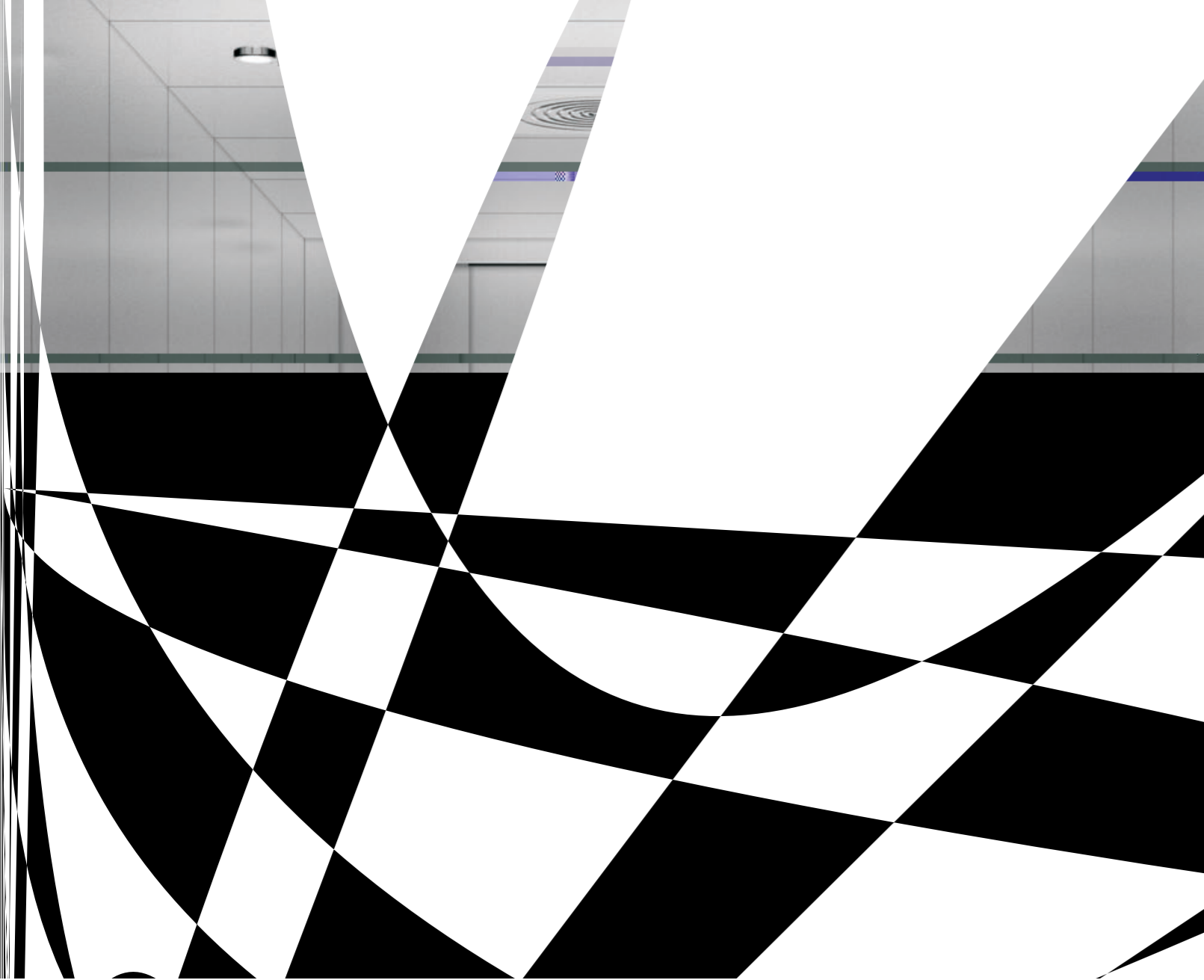
A?A
B?A

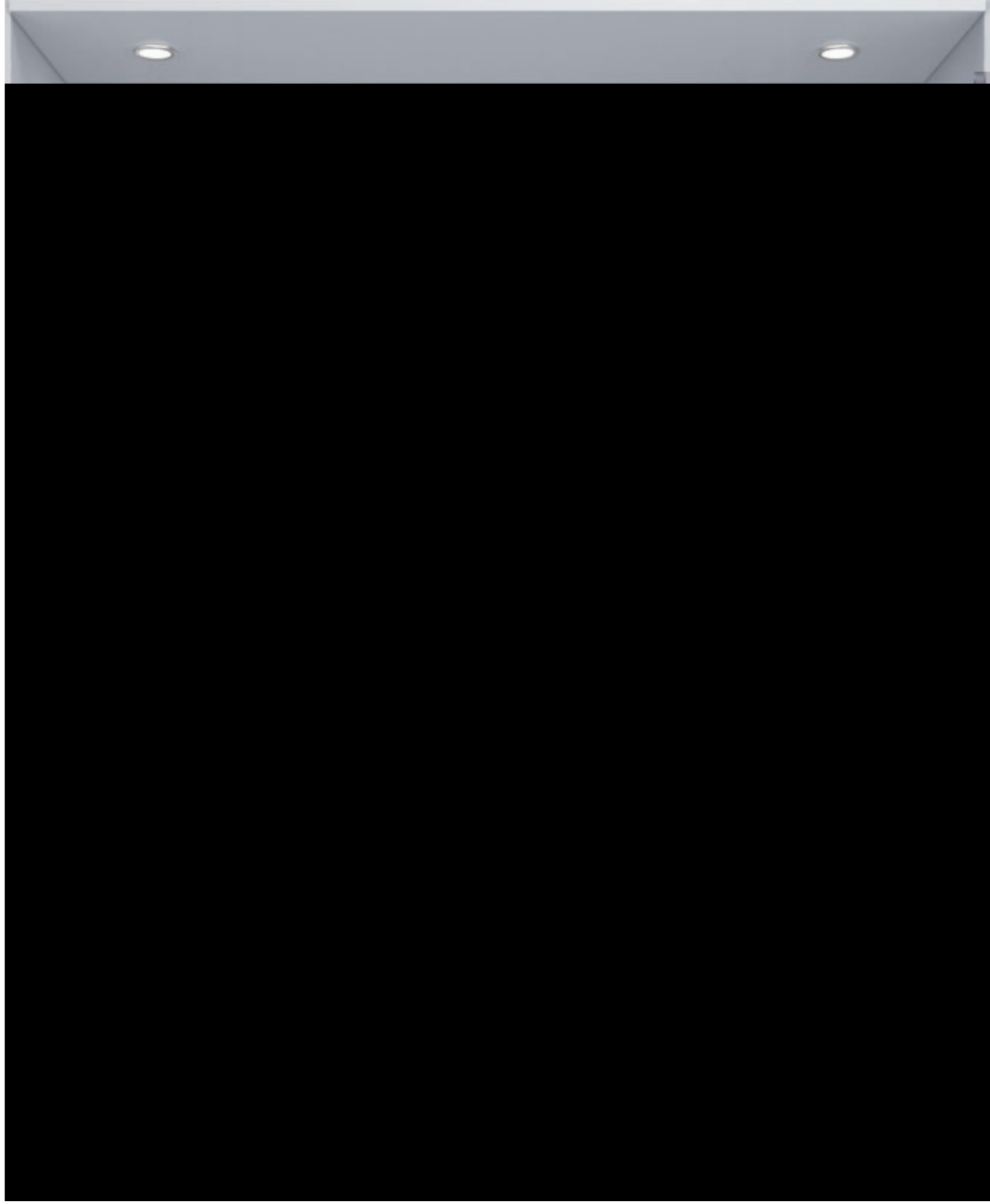
A?A
B?A

ec9 :

EF

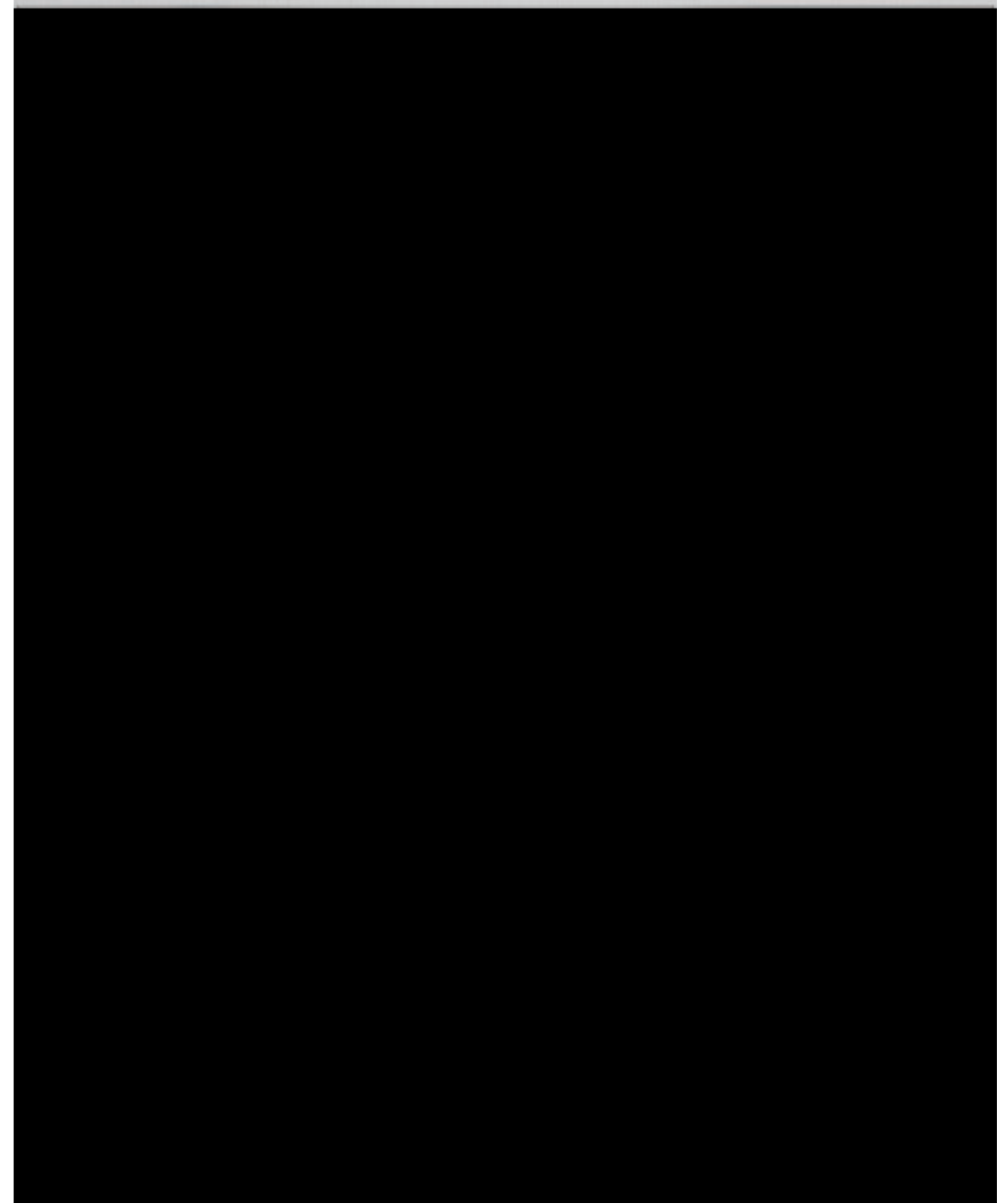
EF





CAR180()

T` aBAA1
]UaBBA1 9 :]VU
]UaBCA1 9 : WDAA1



CAR280()

T` aBAA1
]UaDBA1 9 :]VU
]UaDCA1 9 : WDAA

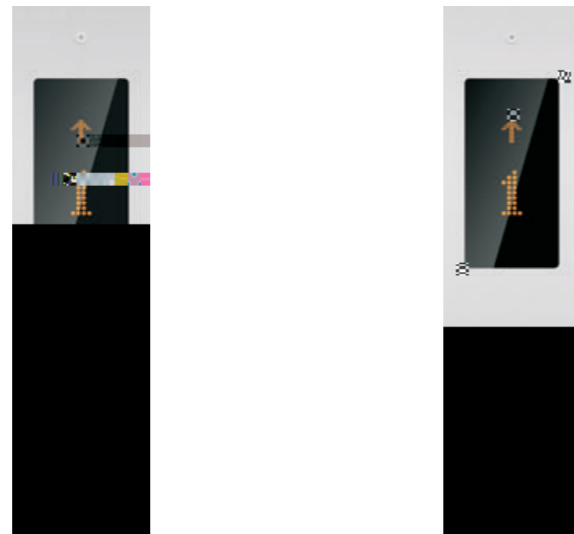
JVU



COP100()



COP104()



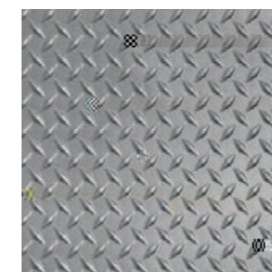
HOP100()



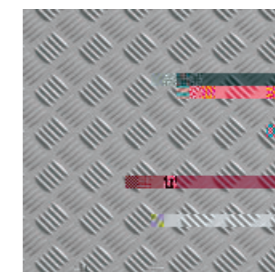
] U[BBA11
] UaBBA11 9 :
UaBCA11 9 :



] U[BCA1
] UaDBA1 9 :
] UaDCA1 9 : UaBCA11



F300

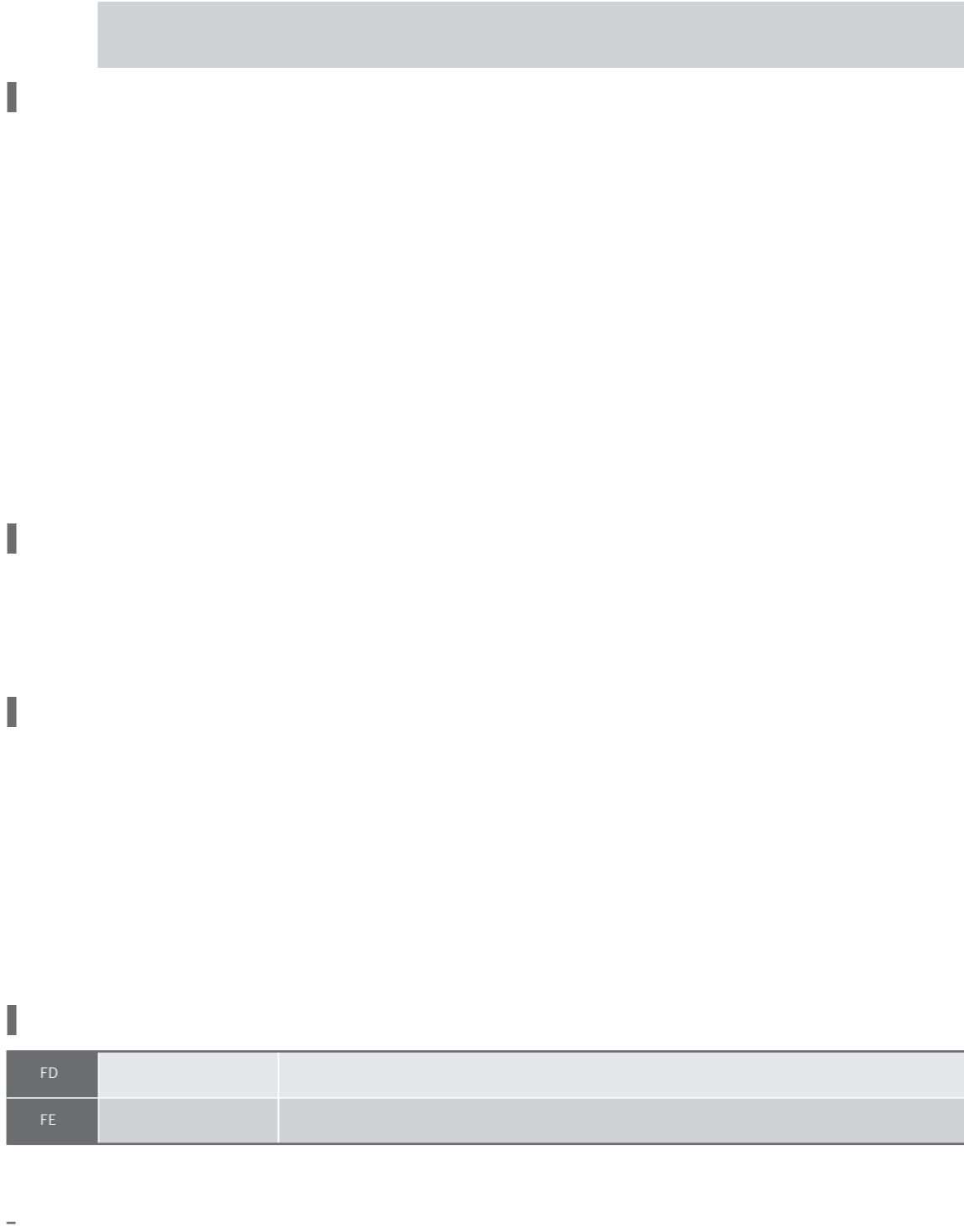


F400

ATLAS

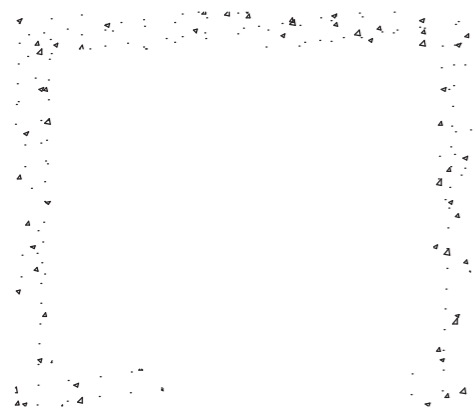
AB		
AC		
AD		
AE		
AF		
AG		
AH		
AI		
AJ		
BA		

FPA



ATLAS>T1

ATLAS>T3



T1

T3

T1

T3

ATLAS-T3

ATLAS-T1

(kg)	(m/s)	(mm)			(mm)		(mm)	(mm)	(m)	(mm)	(RVV)
		(+)	(+)		(+)	(+)					
1000	0.5	1400*1600*2200	1400*2100		2500*2100	2500*2100	4200	1500	45	2500*2100*2200	3*6mm ² +2*6mm ²
	1.0				4300	1600					

B?



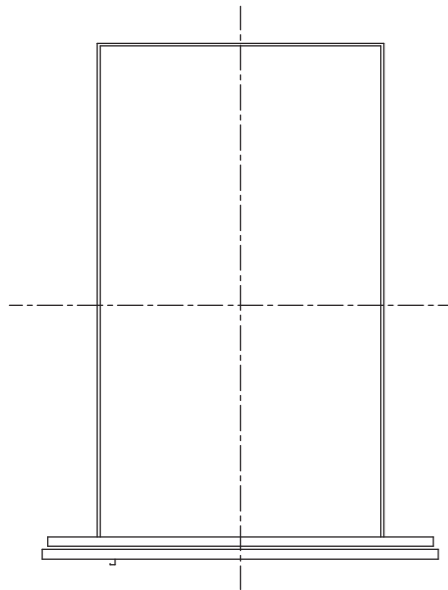
CD

B?



CE

ATLAS>T8



T8

ATLAS>T12

T12

T8

T12

ATLAS-T8

(kg)	(m/s)	(mm)		(mm)	(mm)		(mm)	(mm)	(m)	(mm)		(RVV)
		(*)	(*)		(*)	(*)				(*)	(*)	
3200	0.5	2300*2600*2500	1800*2400		3400*3050	3450*3100	4500	1600	45	3400*3050*2200	3450*3100*2200	3*6mm ² +2*6mm ²
	1.0						4550	1600				3*10mm ² +2*6mm ²
4000	0.5	2300*3200*2500	1800*2400		3400*3550	3450*3700	4500	1600	45	3400*3550*2200	3450*3700*2200	3*6mm ² +2*6mm ²
	1.0						4550	1600				3*16mm ² +2*10mm ²
5000	0.5	2500*3500*2500	2200*2400		3600*3850	3750*4000	4500	1600	45	3600*3850*2200	3750*4000*2200	3*10mm ² +2*6mm ²
	1.0						4550	1600				3*25mm ² +2*16mm ²
6000	0.5	2500*4200*2500	2200*2400		3600*4550	3600*4700	4500	1600	45	3600*4550*2300	3600*4700*2300	3*10mm ² +2*6mm ²
	1.0						4550	1600				3*25mm ² +2*16mm ²
7000	0.5	2800*4300*2500	2500*2400		4000*4650	4000*4800	4500	1750	45	4000*4650*2300	4000*4800*2300	3*16mm ² +2*10mm ²
	1.0						4550	1750				3*35mm ² +2*16mm ²
8000	0.5	2800*4900*2500	2500*2400		4000*5250	4000*5400	4500	1750	45	4000*5250*2300	4000*5400*2300	3*16mm ² +2*10mm ²
	1.0						4800	1750				3*50mm ² +2*25mm ²

ATLAS-T12

(kg)	(m/s)	(mm)		(mm)	(mm)		(mm)	(mm)	(m)	(mm)		(RVV)
		(*)	(*)		(*)	(*)				(*)	(*)	
9000	0.5	2800*5400*2500	2500*2400		4050*5750	4050*5900	4500	1850	45	4050*5750*2300	4050*5900*2300	3*25mm ² +2*16mm ²
	0.63						4500	1850				3*25mm ² +2*16mm ²
10000	0.5	3000*5600*2500	2800*2400		4500*5950	4500*6100	4500	1850	45	4050*5950*2300	4500*6100*2300	3*25mm ² +2*16mm ²
	0.63						4500	2000				3*35mm ² +2*16mm ²
11000	0.5	3000*6100*2500	2800*2400		4500*6450	4500*6600	4500	2000	45	4500*6450*2300	4500*6600*2300	3*50mm ² +2*25mm ²
	0.63						4500	2000				3*25mm ² +2*16mm ²
12000	0.5	3000*6700*2500	2800*2400		4500*7050	4500*7200	4500	2000	45	4500*7050*2300	4500*7200*2300	3*25mm ² +2*16mm ²
	0.63						4800	2000				3*50mm ² +2*25mm ²

ATLAS WT3



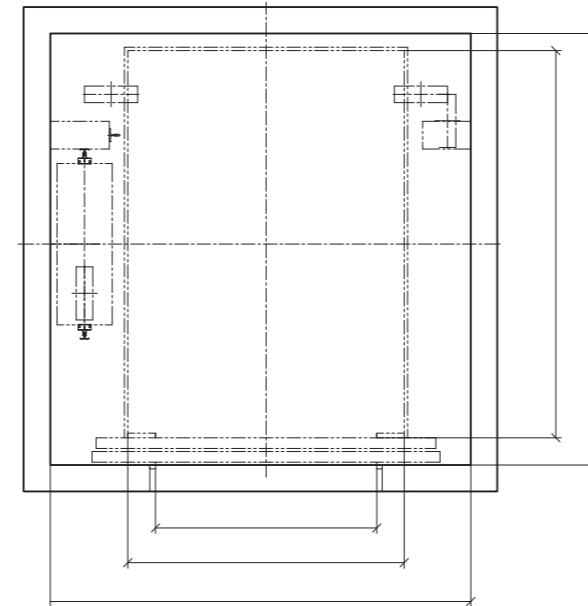
WT3

WT3

ATLAS-WT3

(kg)	(m/s)	(mm)	(mm)	(mm)		(mm)	(mm)	(m)	(RVV)
BFAA	A,F	BGAA; CBAA; CCAA	BEAA; CBAA	CI AA; CFAA	CI AA; CGAA	EDAA	BFAA	EF	D; G- ~ < C; G- ~
	B								
CAAA	A,F	BI AA; CDAA; CCAA	BGAA; CBAA	DAAA; CHAA	DAAA; CI AA	EEAA	BFAA	EF	D; BA- ~ < C; G- ~
	B								
CFAA	A,F	CAAA; CFAA; CCAA	BI AA; CBAA	DDAA; CJAA	DDAA; DAAA	EEAA	BFAA	EF	D; G- ~ < C; G- ~
	B								
DAAA	A,F	CDAA; CFAA; CCAA	CAAA; CBAA	DGAA; CJAA	DGAA; DAAA	EEAA	BFAA	EF	D; BA- ~ < C; G- ~
	B								

ATLAS WT5



WT5

WT5

ATLAS-WT5

