



# BUILDINGEYE



+86-769-82078888    +86-769-87732448  
400-6789-443    www.ifelift.com

AACHHE

**IFE** 快意电梯



## CLASSICAL & GRACEFUL

IFE BUILDINGEYE-JO,BUILDINGEYE-ME

BUILDINGEYE-JO,BUILDINGEYE-ME IFE  
BUILDINGEYE-JO,BUILDINGEYE-ME

BUILDINGEYE-JO, BUILDINGEYE-ME,embodies the simpleness and elegance by its beautiful shape, inner decoration,and fashionable design. Whenever you ride it , you will see that the ceiling and the floor maps each other, metal car door matches transparent glass which reflects modern atmosphere.  
BUILDINGEYE-JO,BUILDINGEYE-ME panoramic elevator interpreter IFE on the building function and aesthetics to grasp vividly rendered, so that BUILDINGEYE -JO, BUILDINGEYE-ME in the construction both inside and outside with a wealth of appeal.



market



hotel



scenic spot



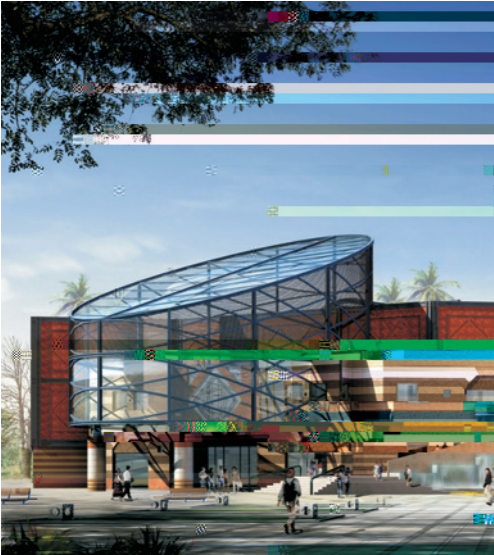
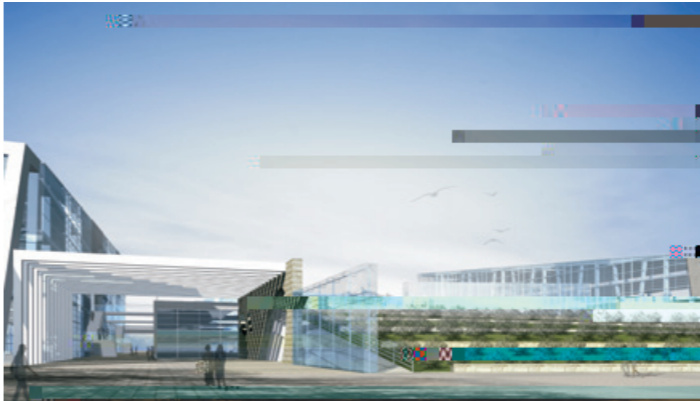
FOREIGN REPRESENTATIVE CASES



MASHARY  
Kuwait MASHARY MALL



Existing Village Hotel Albert Court



Sha-Ali  
Bangladesh Sha-Ali Shopping



MISHREFLN-4124  
Kuwait LN-4124 NATIONAL SECURITY BUREAU AT MISHREF

ZL201621450975.5





Sf 7 UZ\_XVj V

IFE

Outdoor sightseeing ladder equipped with accompanying cable windproof control system (optional)

q

## LED

LED

### LED car lighting leads the new wave of energy-saving elevators

All cars are equipped with LED lighting devices, which respond to the national call for energy saving, safe, efficient, radiation-free and easy to maintain. It is a modern model of healthy and green living.

45%

40 45% 5 10dB(A)

### The energy saving of environmental protection driving system is up to 45%

The elevator is innovatively driven by permanent magnet synchronous traction machine to improve the operation efficiency, with low starting current, small volume and low noise. Compared with the elevator driven by worm wheel and worm, the elevator saves energy by 40-45% and reduces noise by 5-10db (A).

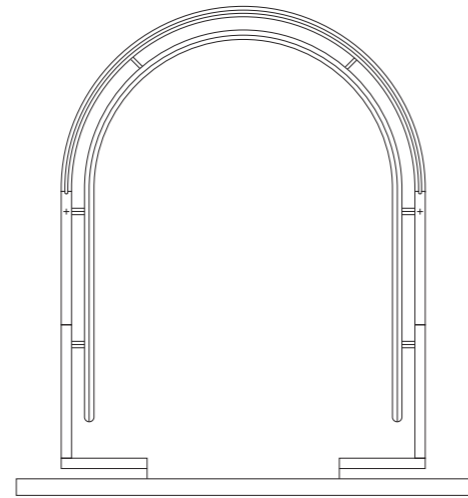
## IFE

### Intelligent control system to save more energy

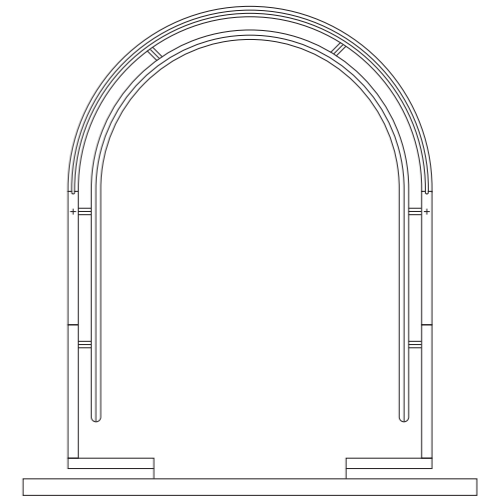
IFE responds to green environmental needs and creates green driven elevators for customers. For example, when no one is in the elevator, the intelligent control system enables lighting, ventilation and so on to automatically switch to standby mode.



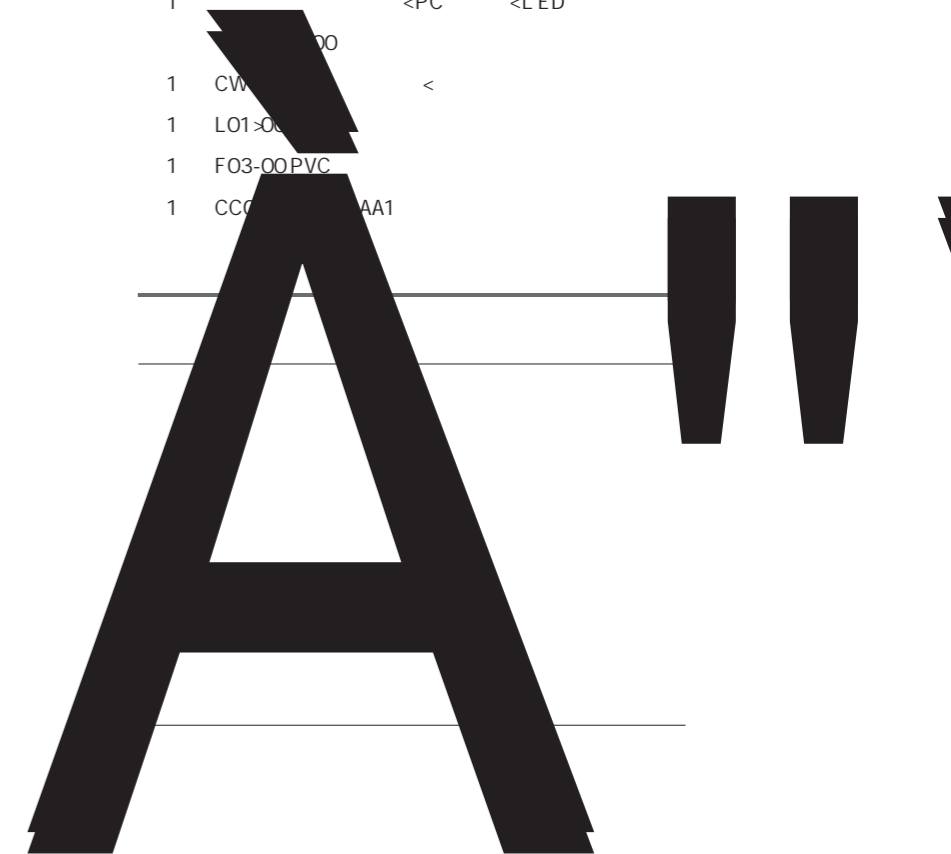
BEC01-00

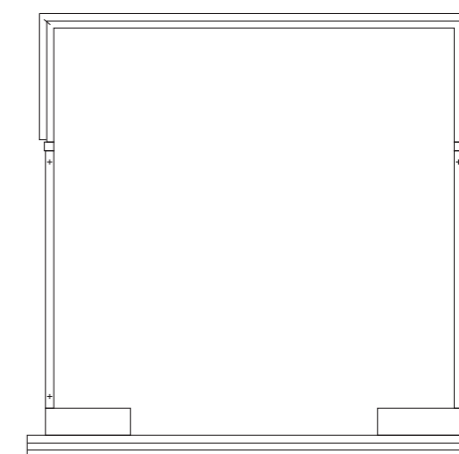
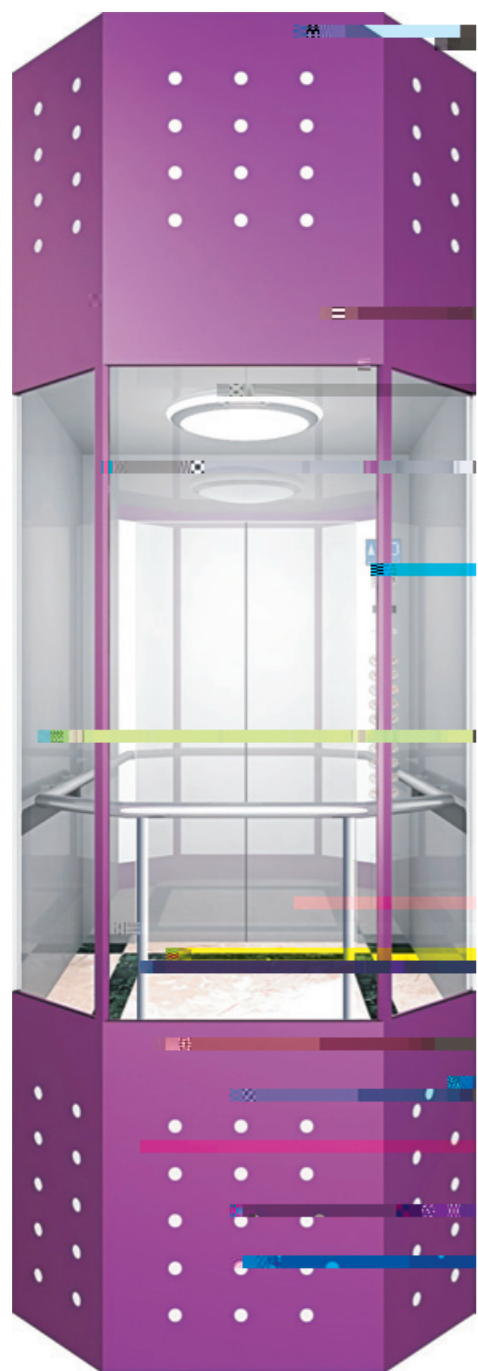


- 
- |   |           |   |   |
|---|-----------|---|---|
| 1 | C50-00    | < | 1 |
|   | COP11-00  |   |   |
| 1 | CW98-00   | < |   |
| 1 | L01-00    |   |   |
| 1 | F03-00PVC |   |   |
| 1 | CC01-00   | < |   |
| 1 | H20-00    |   |   |
- 



- 
- |   |           |     |      |
|---|-----------|-----|------|
| 1 |           | <PC | <LED |
|   |           |     |      |
| 1 | CW        | <   |      |
| 1 | L01-00    |     |      |
| 1 | F03-00PVC |     |      |
| 1 | CC01-00   | AA1 |      |
- 





轿厢装饰规格

---

---

---

---

---

---

---

---

# DECORATION CONFIGURATION

HOP37-00( )  
:  
:

HOP37-00(Standard)  
Panel: Hairline Stainless Steel  
Display: White Dot-matrix

HOP41-00( )  
:  
:

HOP41-00(Optional)  
Panel: Hairline Stainless Steel  
Display: White Dot-matrix

HOP38-00( )  
:  
:

HOP38-00(Optional)  
Panel: Hairline Stainless Steel  
Display: White Segment Code

COP34-00( )  
:  
:

COP34-00(Standard)  
Panel: Hairline Stainless Steel  
Display: White Dot-matrix

COP39-00( )  
:  
:

COP39-00(Optional)  
Panel: Hairline Stainless Steel  
Display: White Dot-matrix

COP16-00( )  
:  
:

COP16-00(Optional)  
Panel: Hairline Stainless Steel  
Display: Single Color LCD

## FLOORS



F01-01



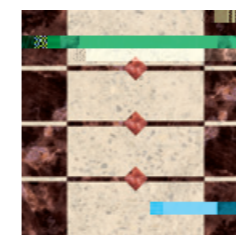
F01-04



F01-05



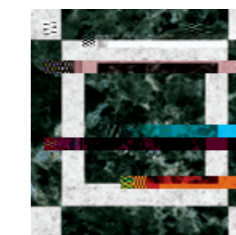
F01-06



F01-07



F01-08



F02-03



F02-04

BUILDING EYE BUILDING EYE BUILDING EYE BUILDING EYE BUILDING EYE FUNCTION TABLE

DI

Standard functions

21	RMG	Reversal movement Guard	
22	BG	Breaker guard	
23	CNRP	Contactora non-releasing protection	
24	FSSES	Speed limited switching in terminator	
25	BUFER	Buffer	
26	MSCP	Microcomputer self-check protection	
27	ALRF	Anti-locked rotor feature of motor	
28	FS	Fault storage	
29	SDCB	Star-delta contactor brake	0.1m/s
30	RALP	Rope Anti-loose Protection	
	EÜ (	Anti--loose	
		oeloo®	
35	DCD	Door circuit detection	

Special operating

Attendant operation

36	AO		
37	BS		
38	IS	Independent servíc	
	MF	Main floor setting	
39			
40			

Optional functions

41	FFS	Firefighting floor setting
42	IO	Inspection operation
43	FCPS	Flexible car park set

Man-machine interface

44	DMPI	Dot-matrix(red) position indicator	LED
45	DMDI	Dot-matrix(red) direction indicator	LED
46	FMFS	Floor market flexible set	
47	AG	Arrival gong	

Emergency Function

48	AB	Alarm button
49	ECL	Emergency car lighting
50	FSI	Five station intercom 4x0.75mm <sup>2</sup> ( 1800 )
51	EFO	Emergency fire operation
52	FO	Fireman's operation
53	ER	Emergency rescue

3	5	Emg	u/ ctie
---	---	-----	---------

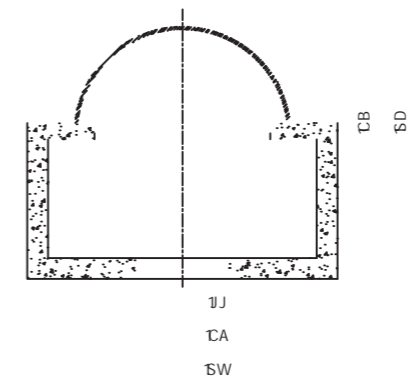
# BUILDINGEYE-JO

## BUILDINGEYE-JO TECHNICAL SPECIFICATION

NO.	Specification	630(8 /p)			800(10 /p)			1050(14 /p)			1350(18 /p)		1600(21 /p)	
01	kg Rated capacity(kg)	630			800			1050			1350		1600	
02	Car shape													
03	m/s Speed(m/s)	1.0	1.0	1.0	1.0	1.0	1.0	1.0	1.0	1.0	1.0	1.0	1.0	
04	Control system	Full collective operation												
05	Driving system	VVVF VVVF Driving												
06	Door control	VVVF VVVF Door control												
07	Traction machine	PM/Gearless												
08	Communication method	Serial Communication												
09	* * Car size(width*depth*height) (mm)	1100* 1400* 2350	1100*1550*2350			1300* 1450* 2350	1300*1600*2350			1500* 1600* 2350	1500*1700*2350		1700*1900*2350	1700*2200*2350
10	* Door opening size(width*height) (mm)	800*2100			800*2100			900*2100			1100*2100		1100*2100	
11	(m) Travel height(TR)	1.0m/s	45			45			45			45		45
		1.75m/s	75			75			75			75		75
12	* Hoistway size (width*height) (mm)	2200* 1850	2200*2050			2400* 1950	2400*2050			2600* 2050	2600*2150		3050*2350	3050*2650
13	Motor position	In the top of the shaft												
14	(mm) Overhead(OH)	1.0m/s	4700	4700	4700	4700	4700	4700	4700	4700	4700	4700	4700	4700
		1.75m/s	4900	4900	4900	4900	4900	4900	4900	4900	4900	4900	4900	4900
15	(mm) Pit depth(PD)	1.0m/s	1500	1700	1600	1500	1800	1600	1500	1900	1600	2000	2000	
		1.75m/s	1650	1850	1750	1650	1950	1750	1650	2050	1750	2150	2150	
16	Main power supply	380V 50Hz 4												
		1.0m/s	3*6mm <sup>2</sup> +2*6mm <sup>2</sup>						3*10mm <sup>2</sup> +2*6mm <sup>2</sup>					
		1.75m/s	3*6mm <sup>2</sup> +2*6mm <sup>2</sup>						3*10mm <sup>2</sup> +2*6mm <sup>2</sup>					

700mm

Note The following overhead height is only applicable for the elevators that are not inside steel structure shaft and those elevators with car top is no more than 700mm away from the shaft wall.



CB  
SD

JJ  
CA  
SW

Diamond panoramic elevator  
shaft plan

shaft section plan